

ORDINANCE 5374

AN ORDINANCE AMENDING SECTION 50-1027 OF THE LINDSBORG MUNICIPAL CODE RELATING TO FENCE HEIGHT VARIANCES IN THE REQUIRED FRONT YARDS IN THE CITY OF LINDSBORG, KANSAS.

Section 1 Be It Ordained by the Governing Body of the City of Lindsborg, Kansas that Section 50-1027 of the Lindsborg Municipal Code is hereby amended to read as follows:

Sec. 50-1027. - Restrictions regarding fence height variances.

Residential corner lots, which have two required front yards, shall have designated primary and secondary front yards. Corner lot front yard designations are determined by comparing the number of front-facing homes on each street comprising the intersection. The side with the street having the most front-facing homes shall be considered the primary front yard. In the secondary front yard, variances for fence heights up to 6-1/2 feet may be granted but shall not encroach on the required line of sight. Variances for fence heights up to 4 feet may be granted within the sight triangle but must be of open design with a solid portion of no more than 25 percent. Fence height within the sight triangle shall be measured using the vertex of the sight triangle that creates an acute angle with the lowest point of elevation.

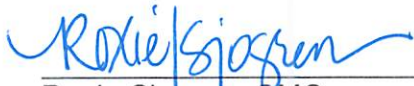
Section 2. This ordinance shall take effect upon publication in the official city newspaper.

Passed and adopted by the Governing Body on this 1st day of August 2022.



Clark Shultz, Mayor

ATTEST:



Roxie Sjogren, CMC
City Clerk

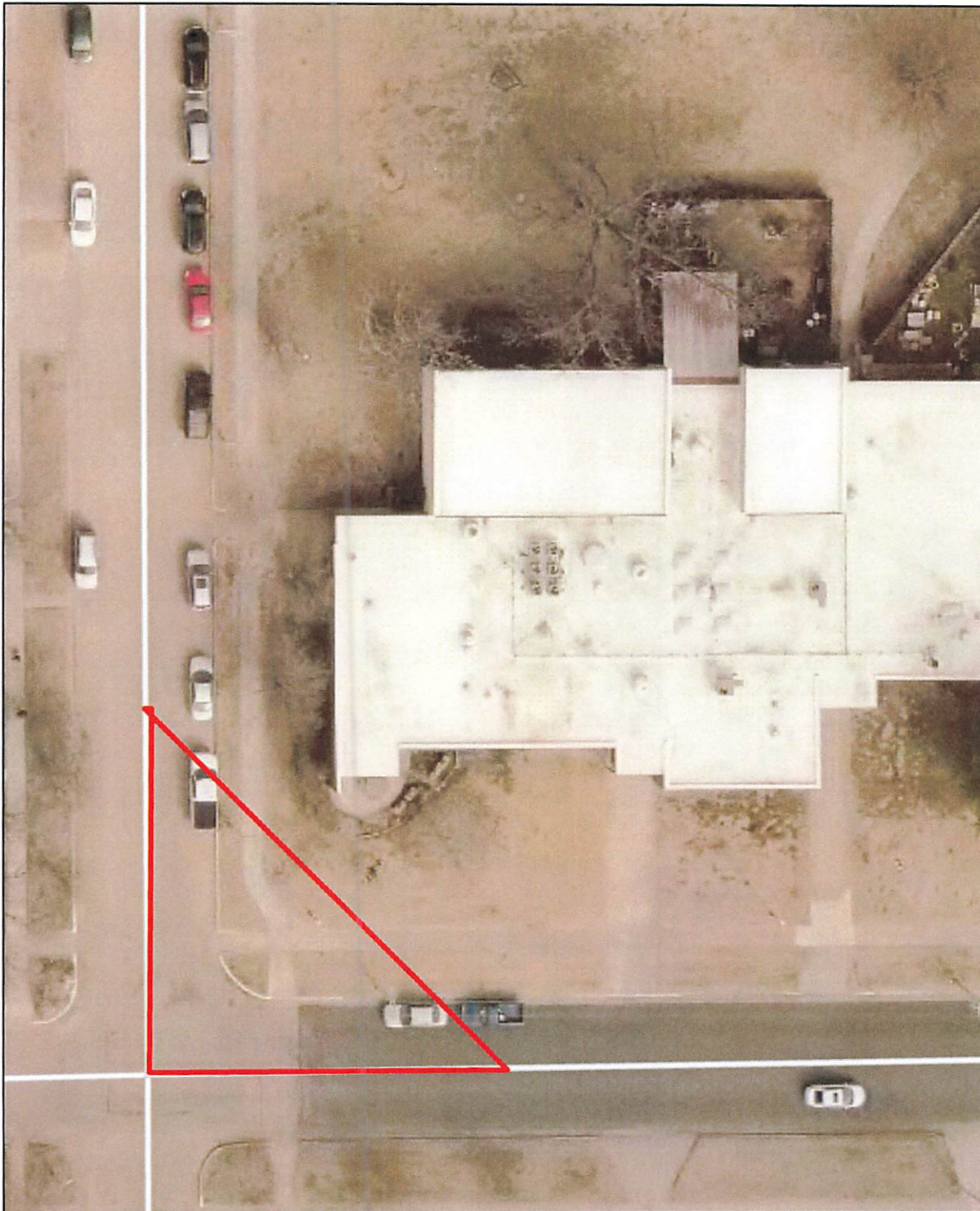
Sight Triangle Map



Description

This map shows the sight triangle at a given intersection measured according the standards outlined in Sec. 50-1. - Definitions of the Lindsborg, Kansas - Code of Ordinances.

Legend



Measured: from the point of intersection of the centerline of the streets, 90 feet in each direction along the centerline of the streets. At the intersection of major or arterial streets, the 90-foot distance shall be increased to 120 feet.

Sight triangle: means an area at a street intersection in which nothing shall be erected, placed, planted or allowed to grow in such a manner as to materially impede vision between a height of 2½ feet and ten feet above the grades of the bottom of the curb of the intersecting streets.

0 45 90 Feet

